

Ship detection

AI + SAR satellites





★ Table of contents

01

Objectives

02

Algorithmes

03

Workflow

04

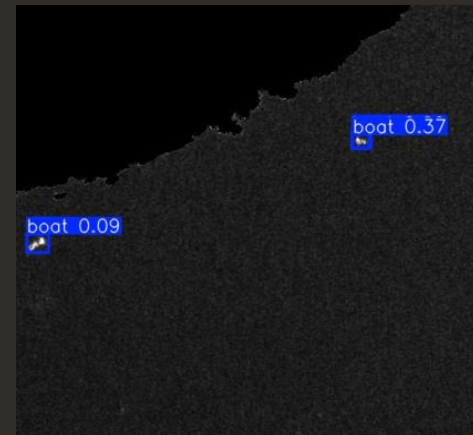
Next steps



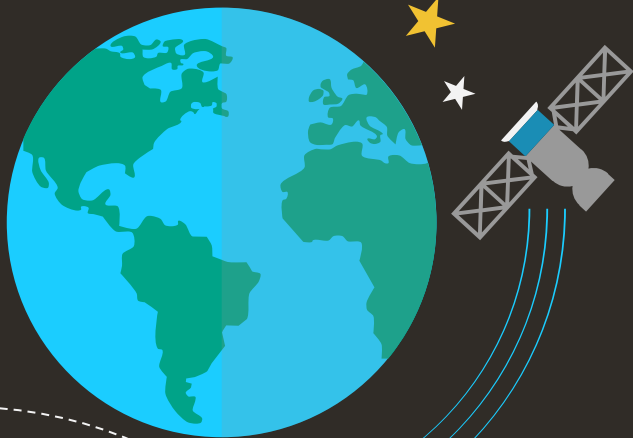
Objectives



- Ship detection (SAR)
- User Interface



Algorithms



YOLO:

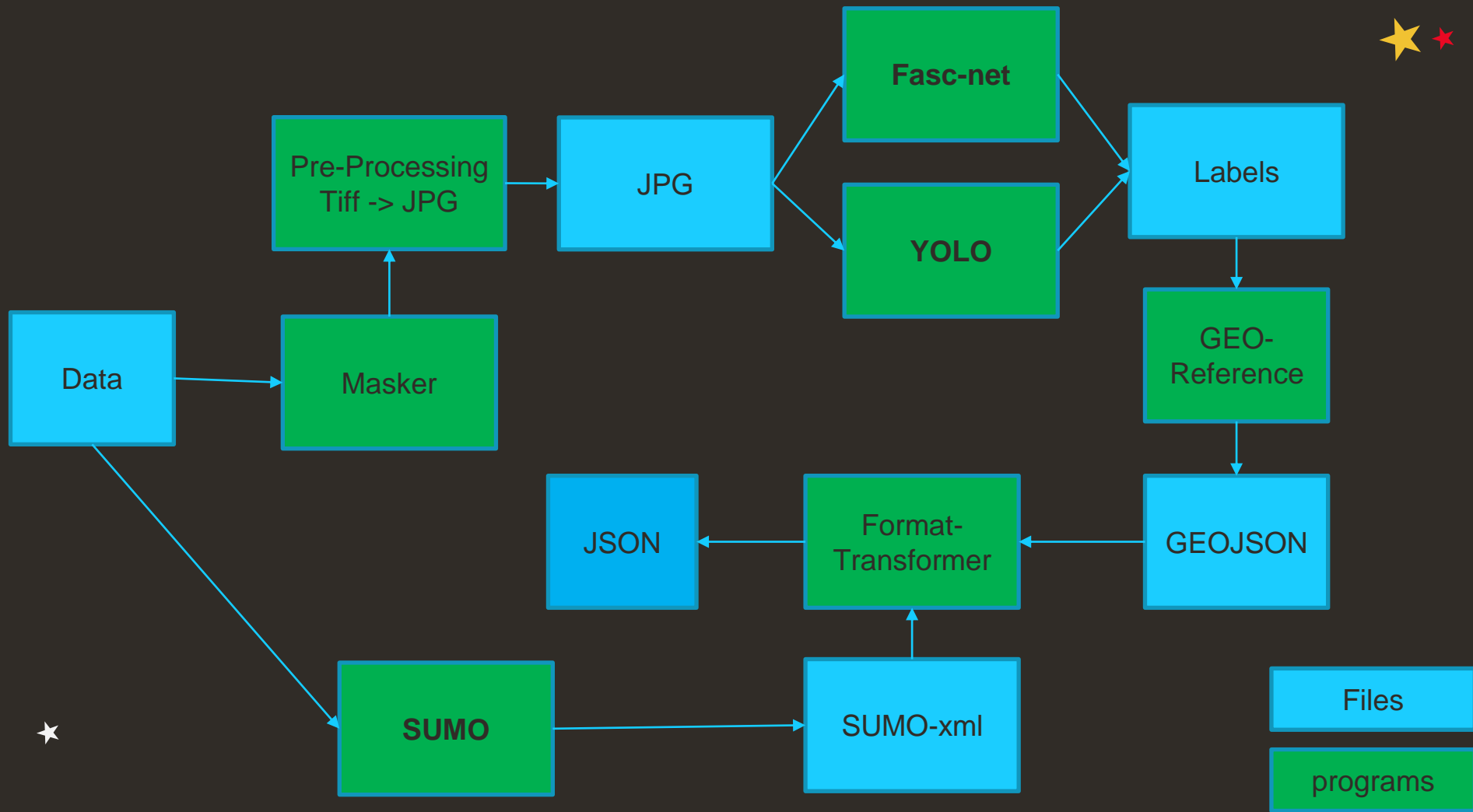
Single-stage + end-to-end deep learning model

SUMO :

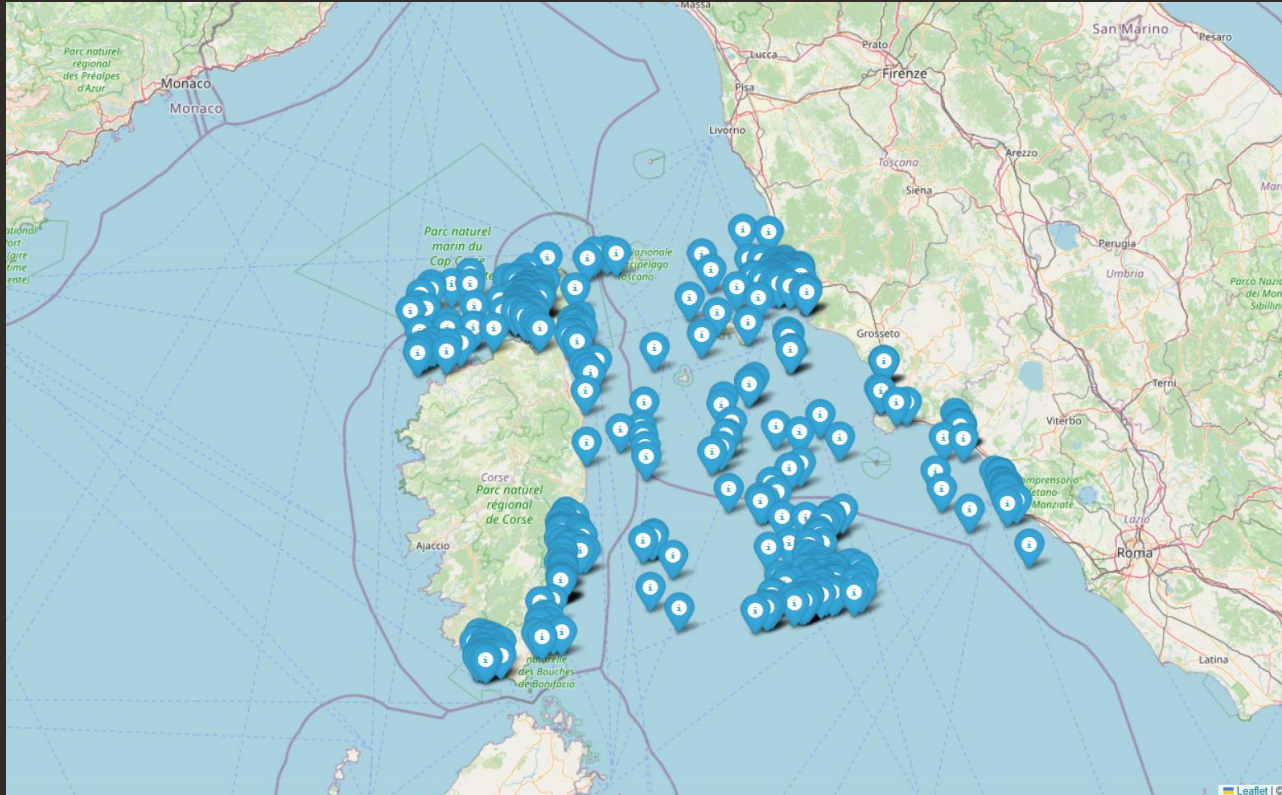
Classical images processing + statistical methods

FASC-Net :

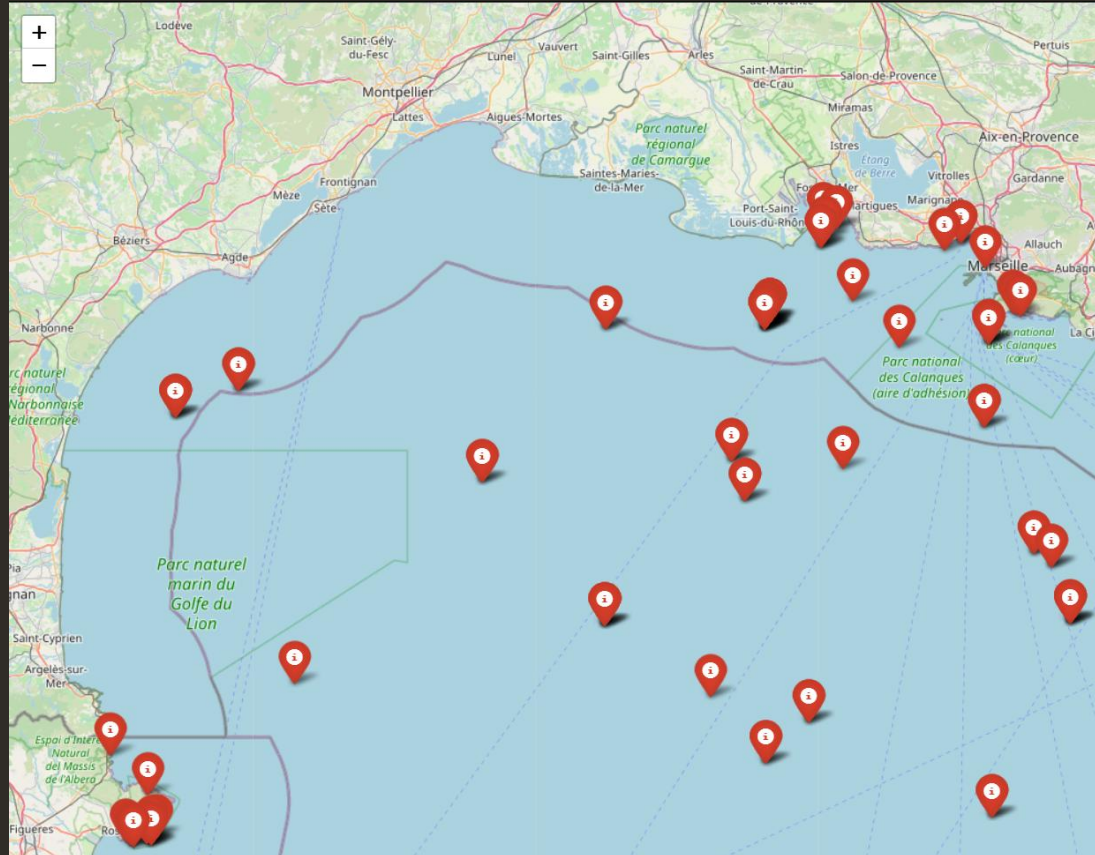
Custom CNN + attention



Prototype maps



Prototype maps



The background is a dark grey space scene. In the top left, a grey comet with a circular head and several thin, grey lines for a tail is shown. A red star is positioned above the comet's head, and a yellow star is to its right. A white dashed line curves across the top of the image. In the bottom right, a large, detailed moon with various grey spots and a white crescent is shown. A yellow star is above it, a red star is to its right, and a white star is below it. A white dashed line loops around the moon. In the bottom left, there is a red star, a yellow star, and a white star. A white dashed line curves across the bottom of the image.

**Thanks for the Attention
any questions ?**